

THIS SURVEY MEETS STANDARDS AS OUTLINED IN CORPS OF ENGINEERS' HYDROGRAPHIC SURVEY MANUAL EM1110-2-1003, DATED NOVEMBER 30, 2013 FOR NAVIGATION AND DREDGING SUPPORT SURVEYS.

HORIZONTAL REFERENCE - NAD 83, NEW JERSEY STATE PLANE, ZONE 2900, U.S. FOOT.

VERTICAL REFERENCE - MEAN LOWER LOW WATER, WHICH IS 2.73' BELOW N.A.V.D. 88.

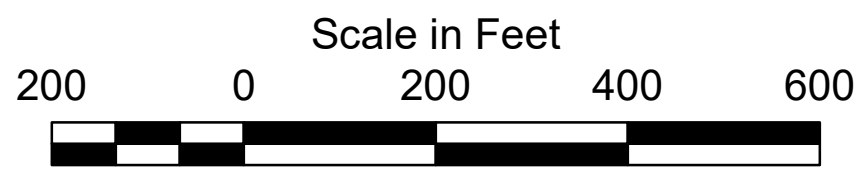
GEOID 12B AND NOAA TIDAL EPOCH: 1983 - 2001 WERE USED. SOUNDINGS ARE EXPRESSED IN FEET AND TENTHS AND REFER TO MEAN LOWER LOW WATER.

THE INFORMATION DEPICTED ON THIS MAP REPRESENT THE RESULTS OF SURVEYS MADE ON THE DATES INDICATED AND CAN ONLY BE CONSIDERED AS INDICATING THE GENERAL CONDITIONS EXISTING AT THAT TIME.

THE POSITIONS OF THE AIDS TO NAVIGATION ARE PROVIDED FOR INFORMATION ONLY, AND SHOULD NOT BE USED FOR NAVIGATION.

THE LIMITS OF THE FEDERAL CHANNEL DEPICT THE MOST CURRENT CHANNEL FRAMEWORK AVAILABLE WHICH CAN ALSO BE DOWNLOADED HERE:
<http://navigation.usace.army.mil/Survey/Framework>

BASE MAPPING LINEWORK OR ORTHOPHOTOGRAPHY HAS BEEN COMPILED FROM A VARIETY OF SOURCES AND DATES AND IS INTENDED TO PORTRAY GENERAL CHARACTERISTICS OF THE SHORELINE AND OTHER FEATURES. TEMPORAL CHANGES MAY HAVE OCCURRED SINCE THIS DATA SET WAS COLLECTED AND SOME PARTS OF THE DATA MAY NO LONGER BE AN ACCURATE REPRESENTATION OF THE SURFACE CONDITIONS.



- Green Buoy
- Red Buoy
- Shoalest Sounding per Quarter
- Channel Framework
- CenterLine
- 12' Curve of Depth

US Army Corps of Engineers
Philadelphia District

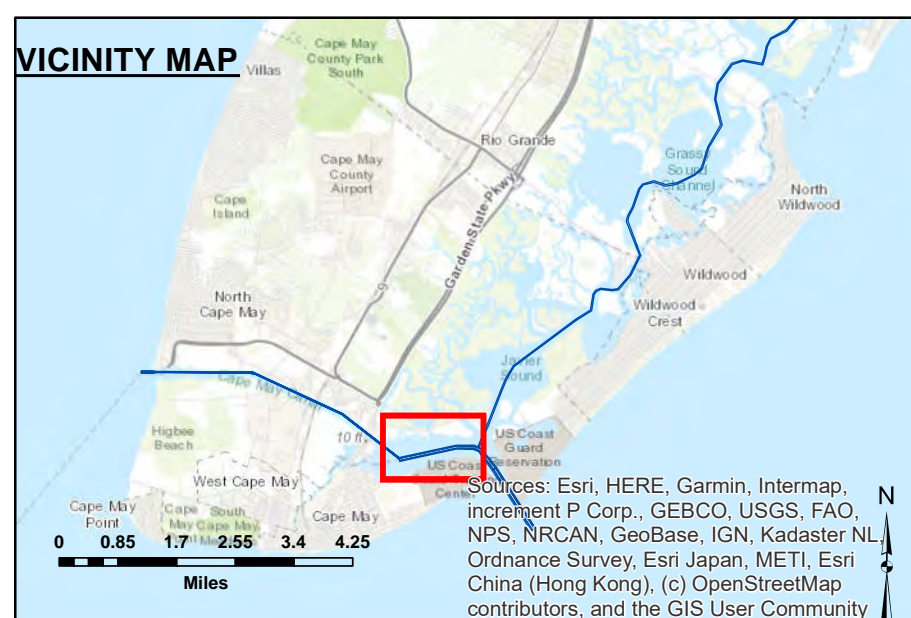
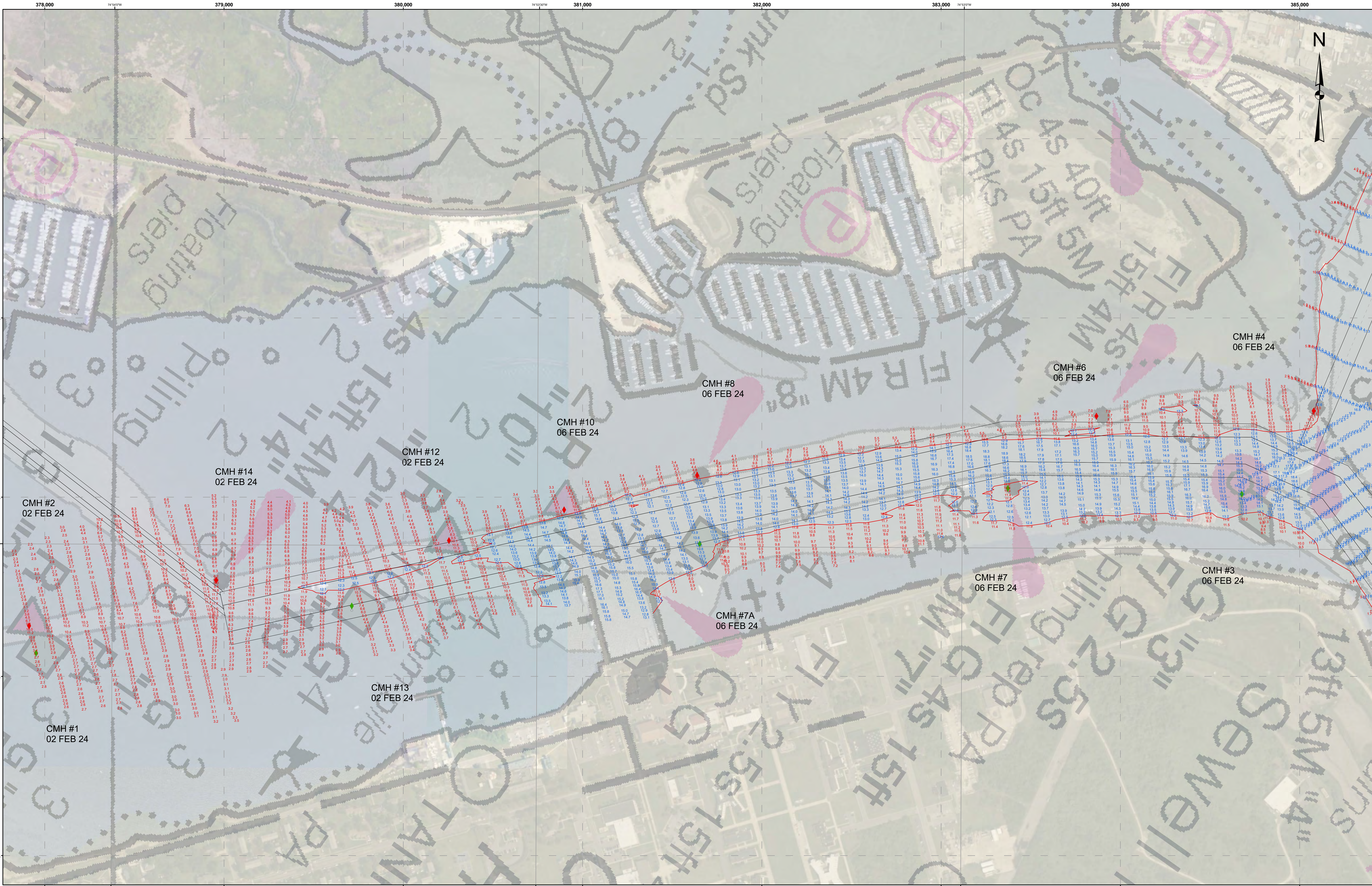
MRK #463 -- 27 FEB 24
MRK #463 to MRK #471 -- 26 FEB 24
MRK #471 to MRK #40CMH -- 22 FEB 24
MRK #2CMH to MRK #12CMH -- 06 FEB 24
MRK #12CMH to MRK #1CMH -- 02 FEB 24

DISCLAIMER
This data is provided for general information only. It is not intended for use in navigation. The Corps of Engineers does not warrant the accuracy or completeness of the data. The Corps of Engineers is not responsible for any errors or omissions in the data. The Corps of Engineers is not responsible for any damage or injury resulting from the use of this data.

Surveyed By:	Checked By:
Drawn By:	Field By:
Field Scale:	E. Antillon
Approved:	Chief, Survey Station

NEW JERSEY INTRACOASTAL WATERWAY
MRK 463 TO MRK 4 CAPE MAY HARBOR
EXAMINATION

E-IW-20



THIS SURVEY MEETS STANDARDS AS OUTLINED IN CORPS OF ENGINEERS' HYDROGRAPHIC SURVEY MANUAL EM1110-2-1003, DATED NOVEMBER 30, 2013 FOR NAVIGATION AND DREDGING SUPPORT SURVEYS.

HORIZONTAL REFERENCE - NAD 83, NEW JERSEY STATE PLANE, ZONE 2900, U.S. FOOT.

VERTICAL REFERENCE - MEAN LOWER LOW WATER, WHICH IS 2.73' BELOW N.A.V.D. 88.

GEOID 12B AND NOAA TIDAL EPOCH: 1983 - 2001 WERE USED. SOUNDINGS ARE EXPRESSED IN FEET AND TENTHS AND REFER TO MEAN LOWER LOW WATER.

THE NEW JERSEY INTRACOASTAL WATERWAY EXTENDS THROUGH CAPE MAY HARBOR AT AN AUTHORIZED DEPTH OF 12 FEET.

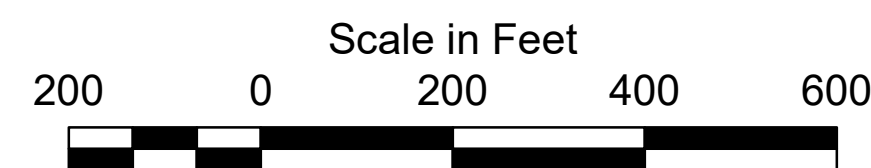
THE INFORMATION DEPICTED ON THIS MAP REPRESENT THE RESULTS OF SURVEYS MADE ON THE DATES INDICATED AND CAN ONLY BE CONSIDERED AS INDICATING THE GENERAL CONDITIONS EXISTING AT THAT TIME.

THE POSITIONS OF THE AIDS TO NAVIGATION ARE PROVIDED FOR INFORMATION ONLY, AND SHOULD NOT BE USED FOR NAVIGATION.

THE LIMITS OF THE FEDERAL CHANNEL DEPICT THE MOST CURRENT CHANNEL FRAMEWORK AVAILABLE WHICH CAN ALSO BE DOWNLOADED HERE:

<http://navigation.usace.army.mil/Survey/Framework>

BASE MAPPING LINEWORK OR ORTHOPHOTOGRAPHY HAS BEEN COMPILED FROM A VARIETY OF SOURCES AND DATES AND IS INTENDED TO PORTRAY GENERAL CHARACTERISTICS OF THE SHORELINE AND OTHER FEATURES. TEMPORAL CHANGES MAY HAVE OCCURRED SINCE THIS DATA SET WAS COLLECTED AND SOME PARTS OF THE DATA MAY NO LONGER BE AN ACCURATE REPRESENTATION OF THE SURFACE CONDITIONS.



- Green Buoy
- Red Buoy
- Shoalest Sounding per Quarter
- Channel Framework
- CenterLine
- 12' Curve of Depth

US Army Corps of Engineers
Philadelphia District

MRK #463 -- 27 FEB 24
MRK #463 to MKR #471 -- 26 FEB 24
MRK #471 to MKR #4CMH -- 22 FEB 24
MRK #7CMH to MKR #12CMH -- 06 FEB 24
MRK #12CMH to MKR #1CMH -- 02 FEB 24

DISCLAIMER
This data is provided for general information only. It is not intended for use in navigation. The Corps of Engineers does not warrant the accuracy or completeness of the data. The Corps of Engineers is not responsible for any errors or omissions in the data. The Corps of Engineers is not responsible for any damages or losses resulting from the use of this data.

U.S. ARMY CORPS OF ENGINEERS
PHILADELPHIA DISTRICT

Surveyed By: E. ANTONIO
Checked By: E. ANTONIO

NEW JERSEY INTRACOASTAL WATERWAY
MRK 463 TO MKR 4 CAPE MAY HARBOR
EXAMINATION

E-IW-20